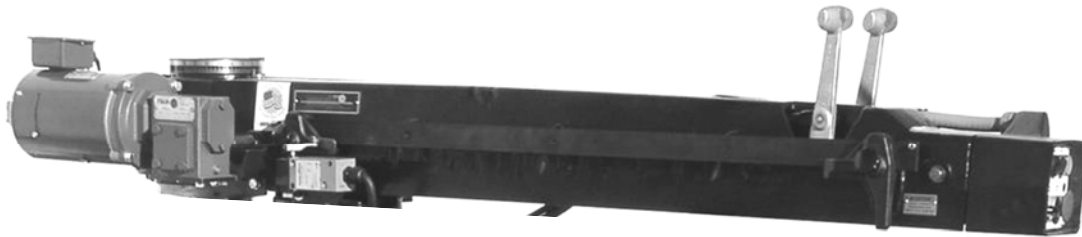




User Manual Parts Bulletin



This booklet is provided for your convenience in the use and care of your new saw with the power crossfeed option. These instructions include operation, usage, precautions, and maintenance information. With proper use your machine will assure long and dependable service.

POWER CROSS FEED

Catalog # 40005

Type 30A

SN 050625126 forward

The Original Saw Company

Britt, Iowa 50423

MADE IN THE USA

TESTING & OPERATING - IMPORTANT!!!

Your new Power Crossfeed unit #40005 are custom made DC drive units. They are made to operate on 120 volt single phase 60 cycle AC current, any other voltage, phase, or cycle could cause damage that could disable or destroy the unit.

Your power cross feed unit has been factory tested and adjusted for proper operation. **Do Not plug the power cord from the power crossfeed into receptacle until steps one, two, and three have been taken.**

- 1 Set the FEED POWER switch on the control panel at the front end of the arm to 'OFF' position.
- 2 Loosten the black lock knobs on each of the two adjustable stops on the cam track on the left side of the arm. Bring rear adjustable stop forward, if possible, to a point where it just contacts the limit switch on the carriage, and lock it (by tightening the knob). Move the front adjustable stop to approximately 6 inches in front of the limit switch, on the carriage, and lock it (by tightening the knob). This will give the carriage approximately 6 inches of travel.
- 3 Set speed control knob to position 3 as indicatd by the numbers around it.
- 4 Plug Power Cross Feed supply cord into power receptacle furnishing 120 volt, 60 cycle single phase A/C current. **UNIT IS NOW READY FOR TEST CYCLE, DO NOT INSTALL BLADE FOR THIS TEST.**
- 5 Move power switch selector to ON position. Lighted selector switch will indicate that unit is powered up and ready for operation.
- 6 Press FORWARD FEED button. Rollerhead should move away from the saw column, stop at the front adjustable stop, return to the rear adjustable stop and remain there until FEED FORWARD buttonis pressed again. Head will travel at maximum speed on its return travel.
- 7 Repeat above cycle tests. Further cycle testing should be done with adjustable stops set at various positions along the track to simulate different possible types of cuts that may be performed. Always tighted the lock knobs to lock the adjustable are stops in their desired position.
- 8 The remaining control buttons on the control panel are: FEED RETURN, SAW START, AND MASTER STOP. FEED RETURN: causes carriage to return to the rear position no matter where along the arm the carriage is. SAW START: starts the main saw motor. MASTER STOP: Stops the power crossfeed feed motor and the main saw motor. This button is a Locking Master Stop or an Emergency Stop button, once it is depressed it will lock in. The power cross feed and the main saw motor will not start until the Master Stop is rotated to the right to unlock, then the switch will snap out. Check the operation by operating both the saw motor and the power cross feed and pressing the MASTER STOP BUTTON. This should stop all operations of the machine (the carriage will not return when this has been pressed until MASTER STOP button has been reset and FEED RETURN has been pressed.
- 9 FORWARD FEED RATE controls rate of forward travel of the carriage. This travel rate is variable, the numbers on the dial are not specific feed rate values, but are for reference only.
- 10 If the above test cycle is satisfactory, your Power Cross Feed System is now ready for operation. Place blade on motor arbor and tighted arbor nut. Turn saw mtor on and check for correct blade rotation. Be sure material is clamped securely to guide fence and table top.

CAUTIONS !!!!!

- 1 Use the Power Cross Feed accessory on 120 volt 60 cycle single phase AC power only. Use only the 8 amp type 3 AB fuses (also known as BUSS # ABC-8), and the 5 amp time delay fuse (BUSS # MDL-5). Never interchange the two fuses as this could cause severe damage to the feed system.
- 2 When cutting new material or beginning to use the power feed option always begin cutting at a very slow rate of speed and adjust the speed up to optimize the cutting quality. Never start fast of severe blade damage could result as well as personal injury.
- 3 Never turn of power switch for disconnect power cord from the power socket while the carriage is in motion, always press the MASTER STOP. The built in dynamic braking action from the Power Feed will not work with the power disconnected or turned off.

Service Procedures:

The Electronic Power Crossfeed unit on your radial arm saw is very difficult to service in the field. Customer repairs will void the warranty. The unit will need to be removed and be sent in for service. If your organization cannot be without your machine, you will need to contact Original Saw sales department and order a replacement end cap and switch assembly with a control cable. This will give you the switch assembly that will allow you to operate the main saw motor. You will still be able to manually control the carriage by utilizing the manual crank that was sent with your machine when new. If your power crossfeed had problems check the following items:

CHECK LIST

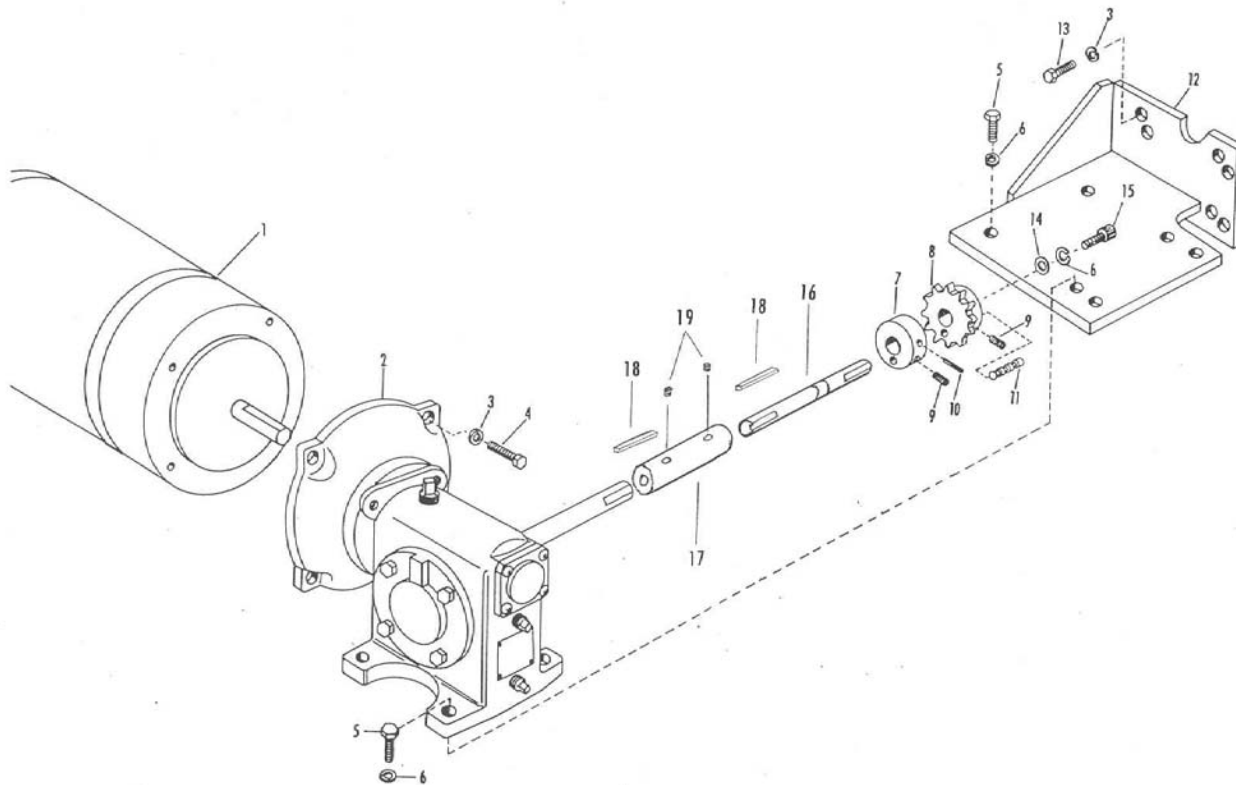
- ⇒ Verify that the indicator light in the control panel is lit when the power selector switch is on the the emergency stop switch is in the 'ON' position.
- ⇒ Make sure that the 110 volt cord is plugged in
- ⇒ Check all of the cords and make sure there no broken wires on the limit switch cable or power cables for the DC drive motor or control module.
- ⇒ Visually check the two fuses in the back of the unit to ensure they are not blown.

If these steps do not show a problem and the power crossfeed system still does not operate, it will be necessary to call Original Saw Company customer service at :

800/733-4063

Let them know that you have gone through the checklist.

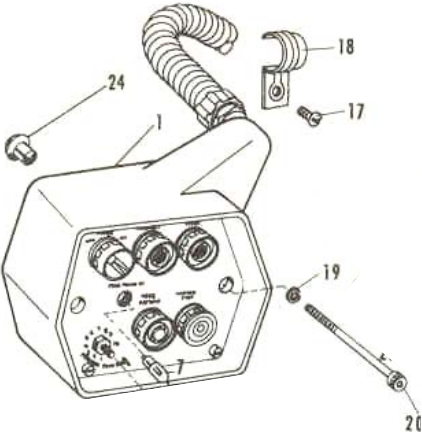
Gear Reducer Drive Assembly



Ind No.	Part Number	Description	Qty	Ind No.	Part Number	Description	Qty
1	086511-01	DC Drive Motor	1	10	099210-24	3/16 x 1 1/2 Roll Pin	1
2	088153-05	Gear Reducer 20:1	1	11	070586	Shear Pin	1
	088153-06	Gear Reducer 40:1	1	12	088154-01	Mounting Bracket	1
3	000415	3/8 Lockwasher	7	13	082098	3/8 - 16 x 3/4 Hex Hd Cap Screw	3
4	082105	3/8-16 x 1 1/4 Hex Hd Cap Screw	4	14	084318	5/16 Flat Washer	1
5	082097	5/16-18 x 1 3/4 Hex Hd Cap Screw	4	15	082205	5/16-18 x 5/8 Soc Hd Cap Screw	1
6	084319	5/16 Lockwasher	5	16	085183	Rear Power Feed Shaft	1
7	070585	Drive Collar	1	17	085184-01	Coupler (includes #19)	1
8	067662	Sprocket	1	18	085186	Woodruff Key	1
9	036886	1/4-28 x 3/8 Set Screw	4	19	n-p-n	See Index #17	1

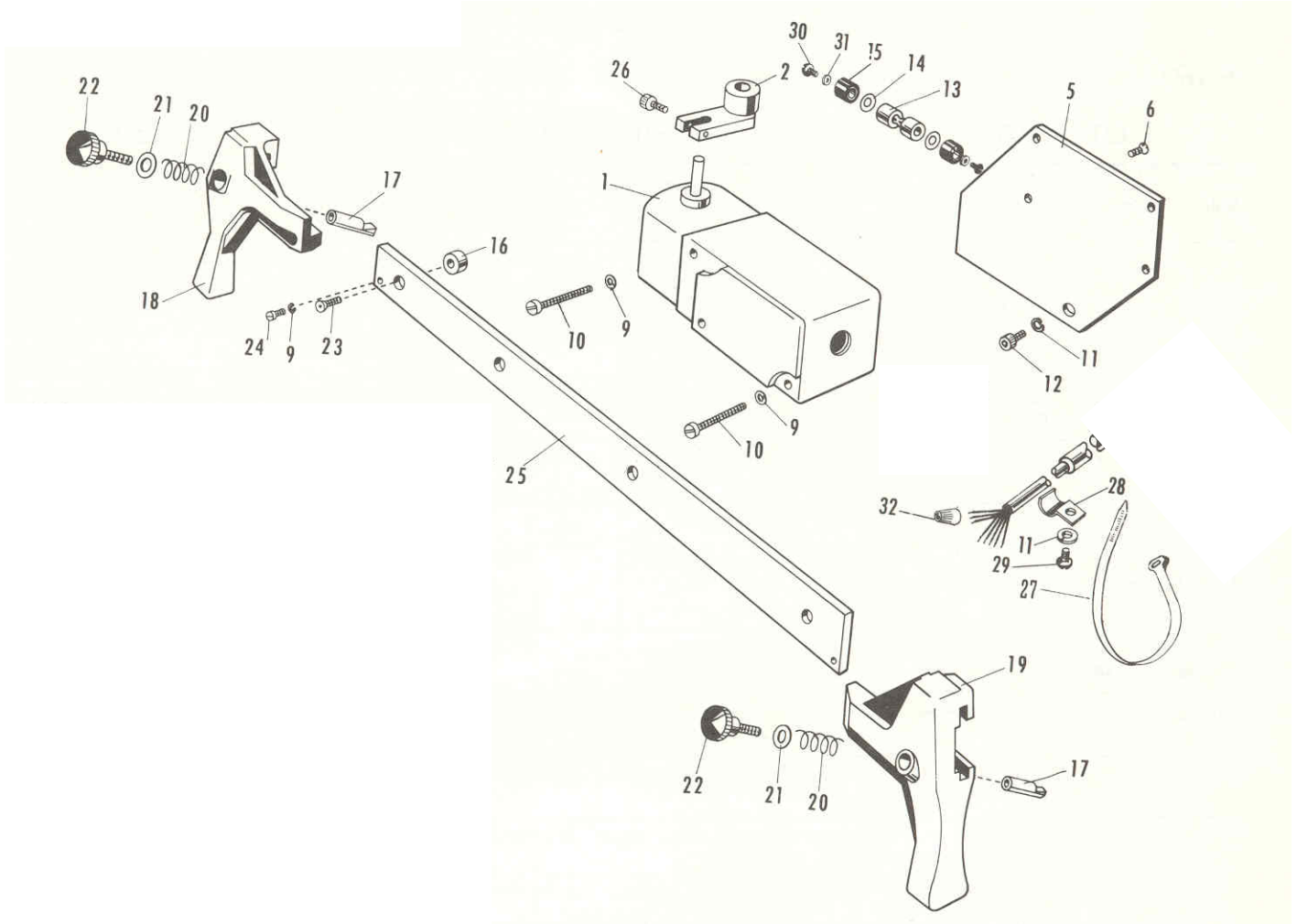
Electronic Control Module

Please Note: Only end cap and seal tight are shown. Control module in enclosure are not shown.



Ind No.	Part Number	Description	Qty
1	072287-02	Electronic Control Module Includes Complete electronics steel enclosure, power cords, limit switch, Assembled End cap with switches and cord with plug-ins, and mag starter.	1
17	099264-08	1/4-20 x 1/2 Phillips hd screw	2
18	081778	Cable Clamp	2
19	099386-06	5/16 Lock washer special	2
20	099155-56	5/16-18 x 3 1/2" Soc hd cap screw	2
Fuses:		BUSS ABC-8 BUSS MDL-5 Never use any other larger rated fuses.	

Limit Switch & Cam Track Assembly



Ind No.	Part Number	Description	Qty	Ind No.	Part Number	Description	Qty
1	067746-02	Limit Switch	1	17	070582	Lock Pin	2
2	070587-01	Actuator Arm	1	18	072494	Rear Cam & Stop	1
5	070528	Switch Bracket	1	19	072493	Front Cam & Stop	1
6	003029	#10-32 x 1/2 Flat Hd Screw	2	20	023187	Spring	2
7		Limit Switch Cable	1	21	084318	5/16 Flat Washer	2
9	000417	#10 Lockwasher	4	22	081368-01	Lock Knob	2
10	000317	#10-32 x 1 3/4 Fil Hd Screw	2	23	067751	1/4-20 x 1 Flat Hd Screw	4
11	084319	5/16 Lockwasher	2	24	000370	#10-32 x 3/8 Fil Hd Screw	1
12	082166	5/16-18 x 3/4 Soc Hd Cap Screw	1	25	070583	Cam Track	1
13	070579	Stop Rod	1	30	080642	#10-24 x 5/8 Round Hd Screw	2
14	080457	Flat Washer	2	31	033648	3/16 Flat Washer	2
15	052508	Bumper	2				

Industrial Use Warranty Information

Your new Original Radial Arm Saw is precision manufactured under strict quality standards. In the unlikely event there is trouble with your machine, the Original Saw Company warrants the machine for the period of one year from the date of purchase. The warranty covers defects in materials and workmanship. We will cover the cost of the defective part and ground shipping. If a replacement part is sent under warranty the defective part must be returned to Original Saw Company or you will be charged for the replacement. The part must also be accompanied by a return goods authorization number. This number can be obtained by calling customer service at 1-800-733-4063. When the part is returned it may be repaired or replaced at our discretion. The part must be shipped prepaid to: The Original Saw Company, Attn. Warranty Replacement Counter, 465 Third Avenue SE, Britt, Iowa 50423.

IMPORTANT

IMPORTANT

IMPORTANT

To assure product reliability, repairs, maintenance and adjustments should be performed by Authorized Service Centers, always using genuine replacement parts.



465 3rd Avenue SE
Britt, Iowa 50423

Phone 641-843-3868 or 800-733-4063

Fax 641-843-3869

For parts or service please contact the manufacturer for the dealer nearest you.